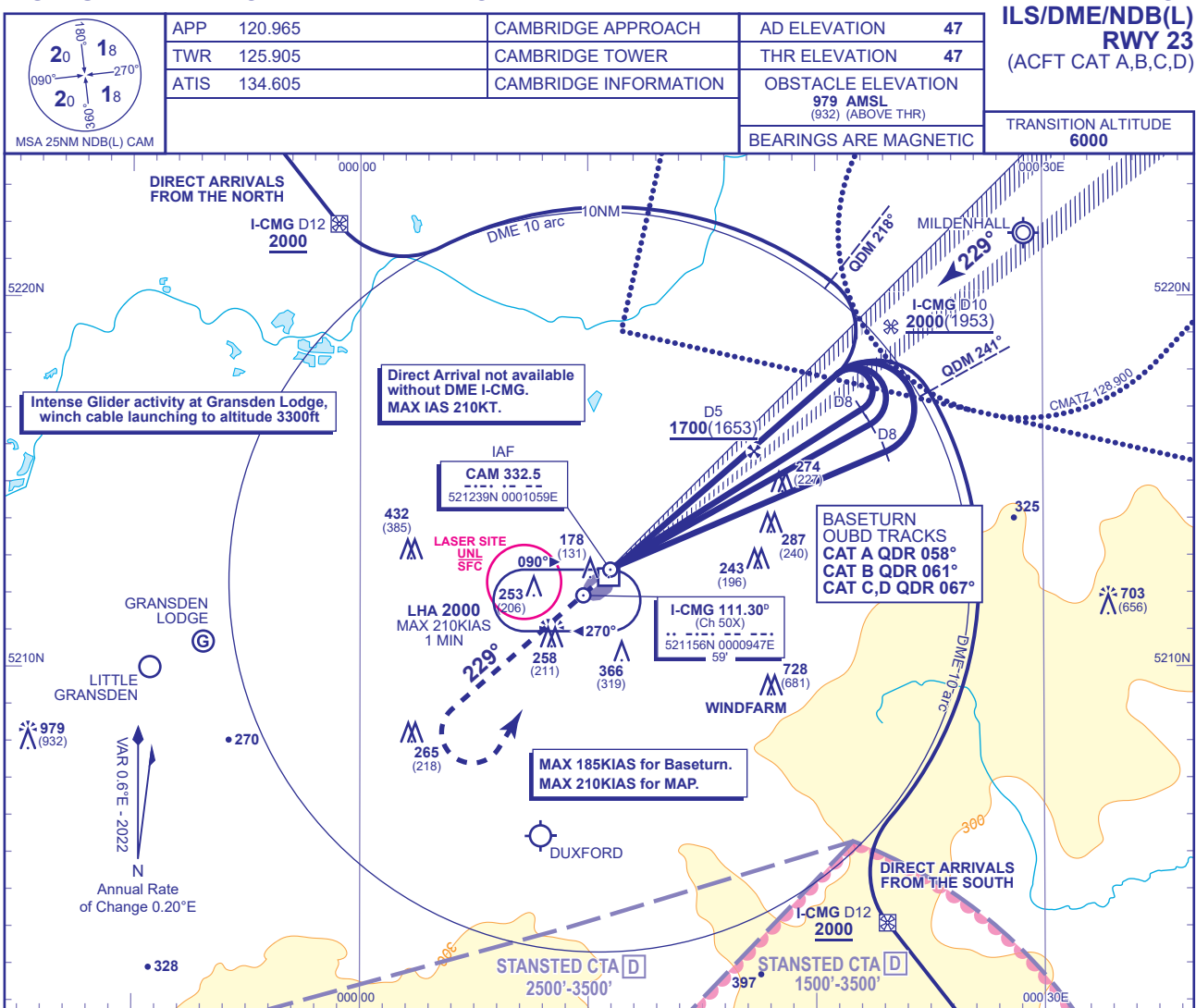


# INSTRUMENT APPROACH CHART - ICAO

## CAMBRIDGE ILS/DME/NDB(L) RWY 23 (ACFT CAT A,B,C,D)

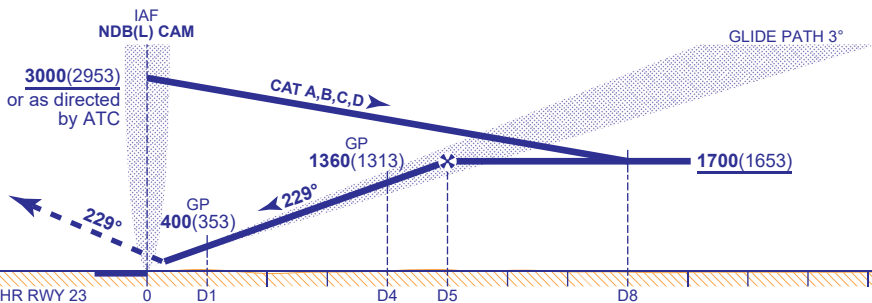


### RECOMMENDED PROFILE GLIDE PATH 3°, 318FT/NM

DME I-CMG	4	3	2	1
ALT(HGT)	1360(1313)	1040(993)	720(673)	400(353)

#### RDH 40

Climb straight ahead to 2000 then turn left to return to NDB(L) CAM at 2000 or as directed.



Aircraft Category		A	B	C	D	Rate of descent	G/S KT	160	140	120	100	80
OCA (OCH)	CAT I	247(200)	247(200)	247(200)	256(209)		FT/MIN	850	740	640	530	420
VM(C)OCA (OCH AAL)		Total Area	660(613)	710(663)	810(763)	1050(1003)						

#### AIRCRAFT UNABLE TO RECEIVE DME I-CMG

Advise ATC. Radar vectoring will be provided to the LOC, and a range check will be passed at 4NM before THR.

- NOTES**
- Aircraft will normally be required to hold not lower than 3000.
  - Direct arrivals are subject to approval from Cambridge ATC.
  - Intense glider activity and winch launching can be expected at Gransden Lodge Glider Site seven days a week during daylight hours. Pilots should avoid overflying the site on approach to Cambridge.

CHANGE (10/24): RADAR FREQUENCY REMOVED.